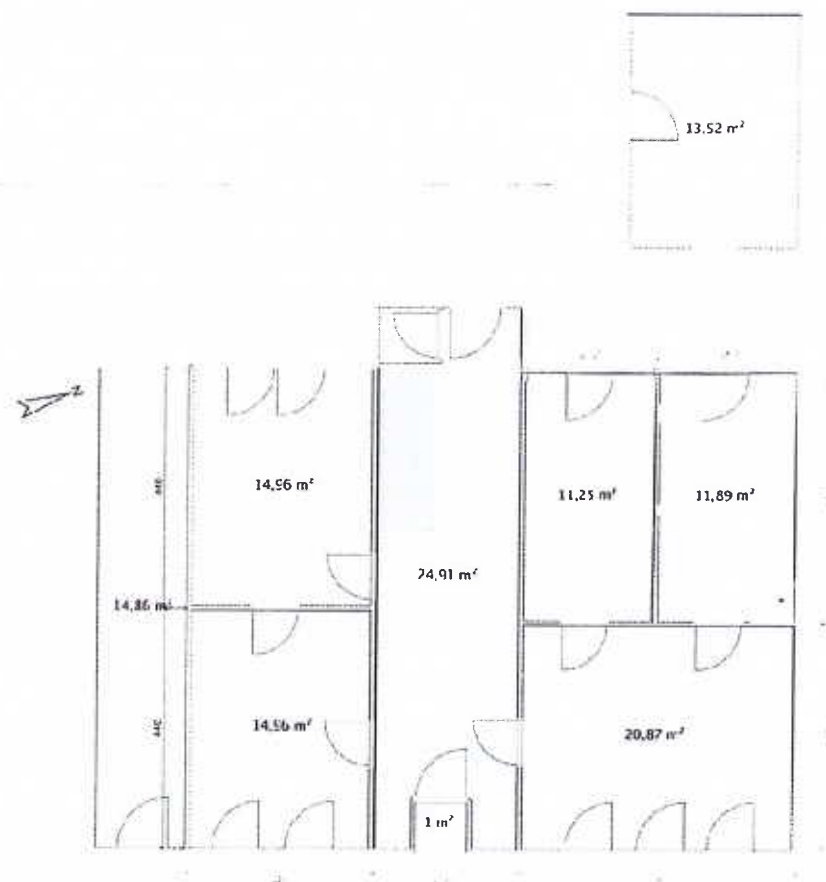
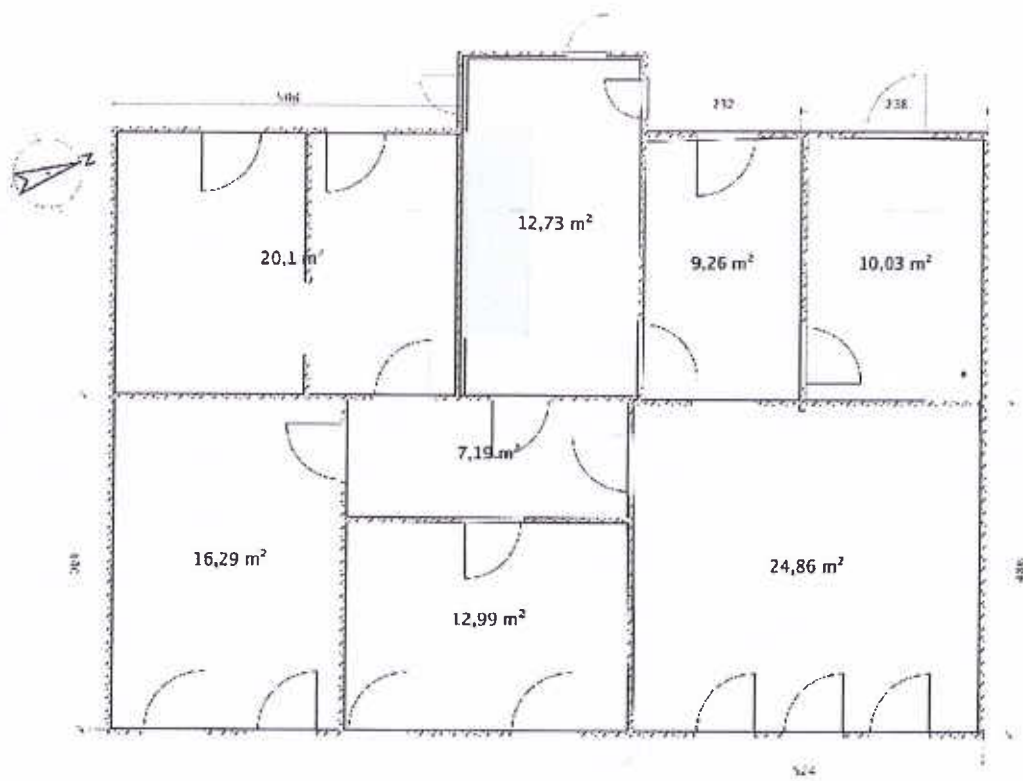


Grundrisse / Visualisierungen

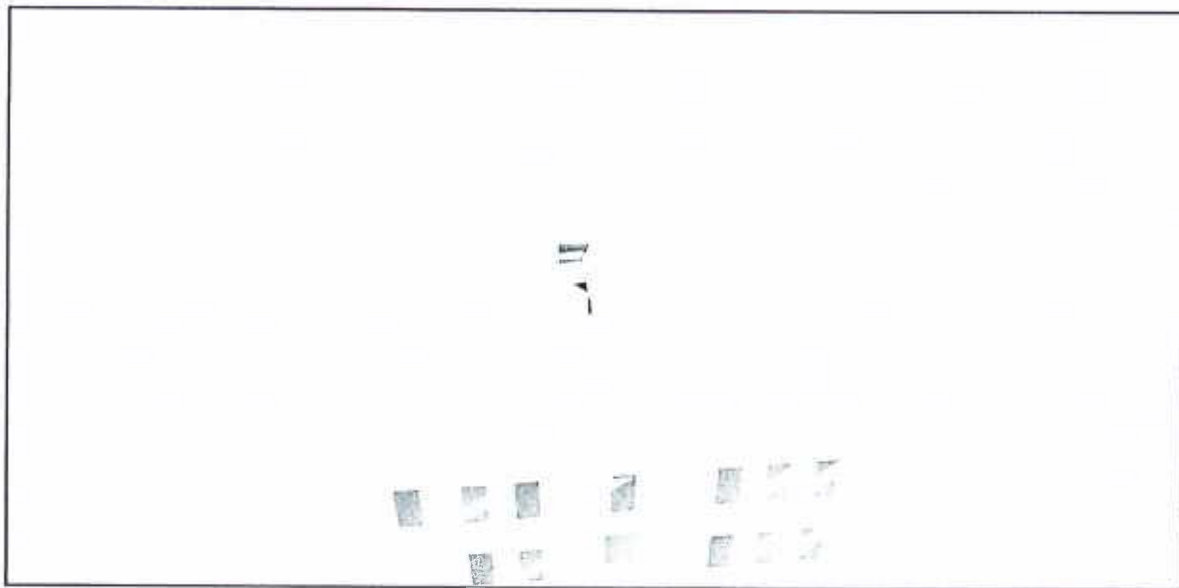
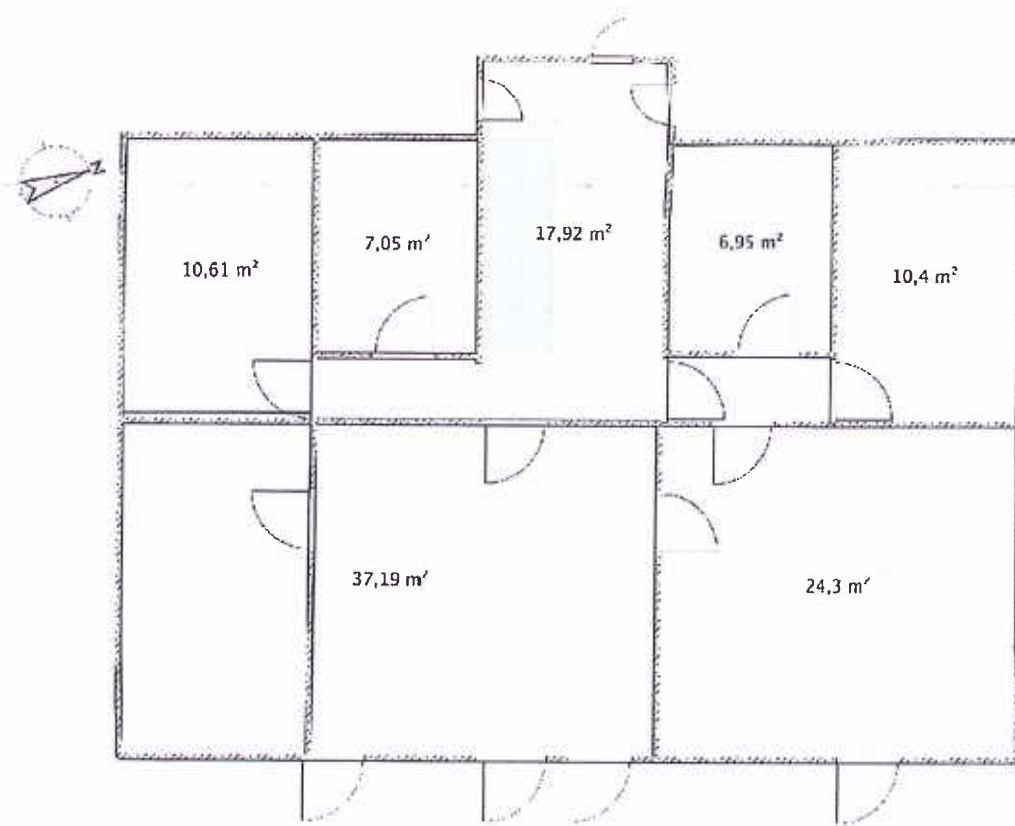
Erdgeschoß



1. Obergeschoß

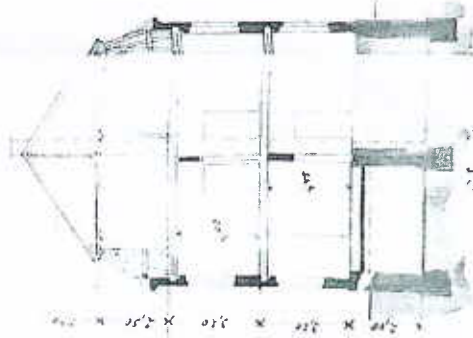


2. Obergeschoß

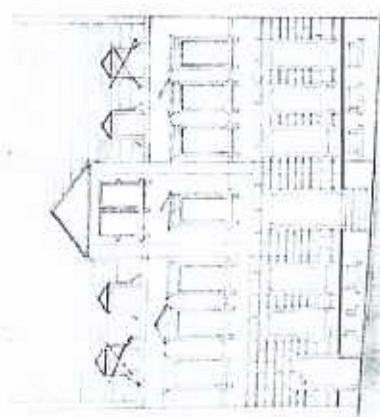


Plan zur Niederschiffen zu abgetheilten Sobir. Hintergelände für Keller Ernst Conrad Härtel, Mauerwerk in Stein

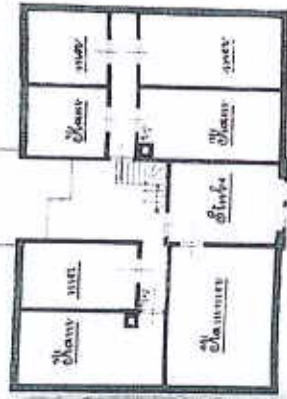
D. Coll. 119



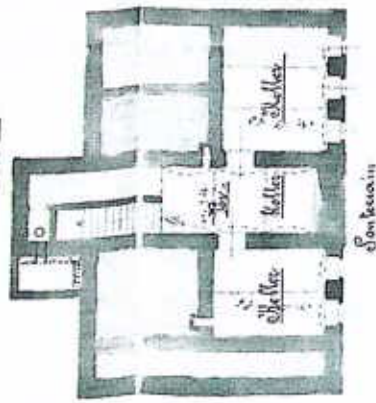
Querschnitt



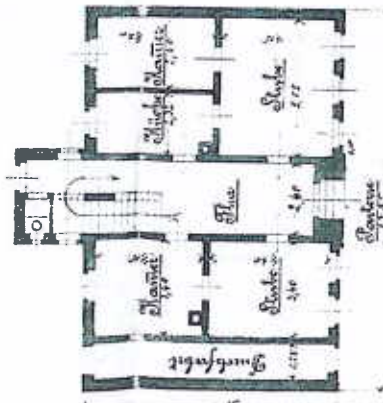
Aussicht



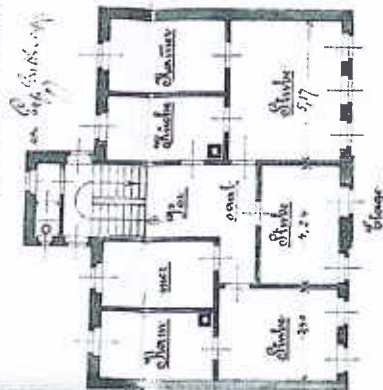
Stammloch
 Die nicht abgetheilten Räume sind
 durch eine große Kellertür
 zu erreichen, aus dem Keller führt
 ein Treppchen nach oben.



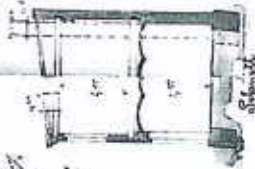
Sanatorium



Sanatorium



Sanatorium



Aussicht



Aussicht



Aussicht



U. J. Härtel
 Architekt

H. 2. 9. 10 93 g. v. v. f. v. t.

Sanatorium